

Metronome: ♩ = 60–69

Cello - Level 1

Memorized.

1. Student chooses one:

One-octave major scale with its tonic arpeggio in D or G (starting on open strings), or F.

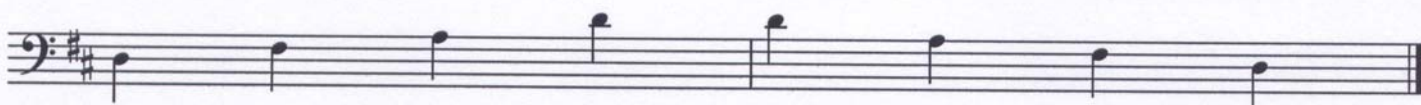
2. Student plays:

Two-octave major scale with its tonic arpeggio in C.

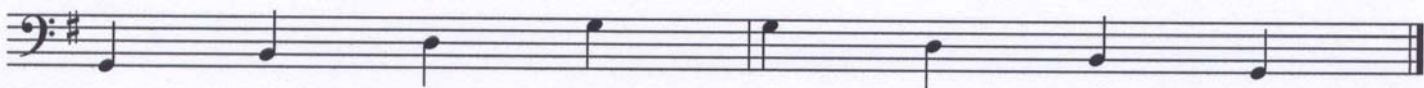
Bowing for scales: separate quarter notes or slur 2 eighth notes. Use half or whole bows.

Bowing for arpeggios: separate quarter notes. Use whole bows.

D Major



G Major



F Major

